

***It's Friday . . .
but Sunday's Coming!***



***The Annual Report of
Auchengray Church Centre Trust (SCIO)
2020 ~ 2021***



Auchengray Church Centre Trust

Annual Report 2020 / 2021

Contents

About ACC Trust	2	Thermal Project Report	8
Trustees	3	Finance	11
Overview of 2020-2021	4	Structure, Governance and Management	15

About ACC Trust

Auchengray Church Centre Trust (SCIO) was set up in October 2012 with the twin aims of providing an independent community church and a recreational community facility. In January 2014 the Church of Scotland transferred ownership of Auchengray Church Centre to the Trust. We are located in the village of Auchengray about 7 miles north of Carnwath, South Lanarkshire and we serve the rural communities of Auchengray, Tarbrax, Woolfords and District.

ACC Trust is a member of Evangelical Alliance UK which represents over 3,500 churches across more than 80 denominations and 700 organisations throughout UK. EA UK encourages co-operation among Christians, while respecting diversity of culture, experience and doctrine.



We are also members of Scotland's Churches Trust which aims to open the door to Scotland's story by exploring living traditions of faith across the country. Their website is a starting point to access information on Scotland's churches of all denominations and a good starting point for your special journeys. You can be assured of a warm welcome when you arrive, not as strangers but as pilgrims and guests.

**ACC Trust is a Scottish Charitable Incorporated Organisation
(SCIO) SC043509**

Our Address is:

Auchengray Church Centre

Auchengray Road, Auchengray, Carnwath, ML11 8LN

Welcome from the Trustees



*Campbell Fisher
(Chairman,
Assistant Treasurer)*

The five current Trustees are as shown below. Founding members Alex and Timea Kelly stood down in July 2020 and Myra Dick joined the Trustees in July 2020.

We are a group of people whose desire is to love and serve Jesus, welcoming each guest who comes to Auchengray Church Centre as unique and special. It is a privilege to serve our community by sharing the good news of Jesus Christ and providing a welcoming venue for church and community activities within Auchengray Church Centre.

Our Annual Report would normally reflect the many and varied activities and events that have taken place over the previous year and the property developments that have taken place within and around the premises during that time.

This past year, however, has been very different. In March 2020 the UK went into lockdown, the premises were closed to the public and all non-essential construction work was put on hold - the global pandemic, Covid 19, had reached our shores bringing major disruption to the norms that we had all taken for granted.



*Stephen Hunter
(Treasurer)*



Myra Dick (from July 2020)



Betty Gowans



Linda Fisher (Secretary)

Overview of 2020 - 2021

On 1 March 2020 all the regular Church Centre activities moved into the refurbished church area to allow work to begin on the hall. The hall ceiling, walls, floor, heating system, mains water supply and electricity were all stripped out. Two weeks later the building was closed temporarily with the expectation that the church, kitchen and toilets would re-open with a temporary heating arrangement and reconnected water supply. Electricity was still available apart from in the hall so all the groups could continue to meet in the church. However, it was at this point that the first Covid lockdown began. The site was made safe and the building work stopped on the 17 March.



March 2020

It resumed five months later, in August 2020, but it has been subject to numerous Covid related interruptions and delays since then.

It was always a complex Project and it has been made considerably more so due to Covid issues.

The Team includes the Architect and Staff, Quantity Surveyor and Staff, Consultant Engineers, Main Contractor, several Sub-contractors, Heating Specialists, and suppliers etc. Each of these has been affected by individuals requiring to furlough, shield or isolate so work has not been continuous. Supplies were interrupted and in some cases no longer available so adjustments have had to be made to allow the Project to progress, maintaining the original specified standard but with some substituted materials.

It was with heavy hearts that the Trustees recognised that we could not even partially open the buildings safely and meet the Covid requirements while the Project was ongoing. The decision was made therefore to remain closed to the public until the Project and Covid situation had reached a point where this could be achieved safely.

We are now, in May 2021, anticipating completion of the Project soon and the Trustees are making preparations for a phased re-opening of the premises during the coming weeks.



May 2021

I'd like to take this opportunity to say it has been a pleasure working with you and your team on this project. It is an understatement to say it threw up some major challenges for you at all stages. I am in awe of your perseverance and determination and congratulate you.

I hope to work with you again in the future.

Administrator of a Major Funder

Peace in the Storm

The Church Garden, however, has remained open throughout, providing an oasis of peace and calm during turbulent times and opportunities to communicate creatively with those around.



Light in the Darkness

By using the outside of the premises, particularly the Church Garden, the Trust has been able to contribute to the life of the Community, often in partnership with others.

During December the story of the first Christmas was told through an outdoor Advent Calendar displayed in the Garden along with a Nativity scene built on a trailer.

Thank you to the Gordon family for providing the Advent Calendar, and also the inspirational "God Rocks" placed around local walks.



Local groups were encouraged to "Light up their area" and we put up additional lights along the hall roofline along with Advent Christmas Trees (instead of Advent candles) in the hall windows.

Thank You to Tarbrax Community Council for a grant of £200 towards the cost of the hall Christmas lights.

Christmas on Tour and Crazy Christmas ice cream!

Thank you to WAT IF? for arranging a tour of the villages by Santa on his sleigh and for including the ACC Trust Nativity Trailer along with that. It was truly a Night of Wonder for all the individuals and families who watched from windows, doorways and gateways.

We were also delighted to provide a stopping point for the WAT IF? ice cream van which visited the Villages on the evening of 23 December with special Christmas treats including locally made cakes, hot chocolate and crazy Christmas ice cream!

Hope at Easter

During the last week of March 2021 the Trust were joined by Valerie Sim from Scripture Union Scotland to present "Exploring Easter" to the children of Auchengray Primary School in the church garden. We put up a gazebo to provide an "open shelter" and each day Valerie told part of the Easter story to a group of children and they then helped us to assemble a display in the garden relating to that episode. The display formed part of an open "walk through the Easter story" during April.



Well done to everyone involved in setting it all up, our local Church makes celebrations like today [Easter Sunday] even more special.

A Parent

Thermal Upgrade and Refurbishment Project Report

As stated earlier, no Project work was undertaken from mid-March 2020 to mid-August 2020. Works completed since August 2020 include:

- ♦ A Ground Source Heating System including new radiators and underfloor heating in the hall. The Renewable Heat Incentive (RHI) has been applied for and a decision is expected in late 2021.
- ♦ Insulation of hall ceiling, walls and floor
- ♦ Hall re-wired including PA provision
- ♦ New lighting in hall, front porch, accessible toilet, side porch and office.
- ♦ New external lighting at entrances, also floodlights.
- ♦ New fire alarm system throughout
- ♦ Front entrance porch reconfigured giving easier access to church and hall
- ♦ New internal doors in the hall, front and side porches
- ♦ Refurbishment of the hall windows
- ♦ Refurbishment of the hall and front entrance porch
- ♦ Storage Wall built
- ♦ Folding partition installed
- ♦ Contract vinyl flooring laid throughout

ECO - INFO

Heating: The main heating supply for Auchengray Church Centre is now via an open loop Ground Source Heating System, drawing water from an aquifer approximately 50 meters below ground level, extracting heat from it then returning the cooler water to the aquifer at a distance from the extraction borehole. The oil boiler has been retained meanwhile to provide high temperature hot water and as a potential back up to the Ground Source Heating system in severe weather.

Insulation: The types of insulation used included natural products as follows:

Wood Fibre Boards in the walls and combe ceilings. They are capable of moving significant amounts of moisture quickly and so actively dry wet structures. They are made with waste wood and are completely recyclable. At the end of their life they can be either recycled for other fibre products, used for fuel or composted. Their embodied energy varies depending on which type of wood fibre is used but all are either carbon neutral or carbon negative in their production.

Calsitherm Climate Boards are used on areas of single leaf stone in the church. They are made from sand and lime (calcium oxide and silicon dioxide). Under superheated steam and high pressure, the mineral raw material is converted into tiny calcium silicate crystals. The crystals are bound to each other by billions of micro-pores which enable high water absorption and enormous transport capacity. Thus, the boards have a tremendous moisture regulating effect and prevent the formation of condensate. This contributes to long-lasting mould prevention even in problem areas.

Sheep's Wool is used in the horizontal attic spaces and under the church floor. Sheep's wool is 100% a natural product. It requires a fraction of the energy to produce than man made wool equivalents with most of this energy required to wash the wool before it is used. E.g. it requires less than 15% of the energy used to manufacture glass wool. It is an outstanding insulator and can absorb 33% of its weight in moisture without compromising its insulating ability. The core of the sheep wool fibre is hygroscopic, meaning that it will absorb water vapour. This makes it particularly suitable where there could be condensation.

These insulating materials will assist in managing moisture, regulating humidity, eliminating mould and minimising heat-loss, helping to maintain stable temperatures throughout, such that the buildings should require less heating in winter and be less likely to overheat in hot weather(!) All three insulating materials are naturally flame retardant.

Lighting: All new and replacement lighting is LED. LED uses around 85% less electricity for the same light output when compared to conventional lighting. This should make a significant impact on our energy use even though we now have more and brighter lights. We also have more flexibility in how we use our lighting.

General Refurbishment: All aspects of the Project have been carried out with consideration for the architectural and historic relevance of the building as well as to minimise heat loss, increase sustainability and provide greater flexibility for future use.

We were fortunate to have **Scott Wham** heading the Design Team from the first feasibility study in 2016. Scott specialises in heritage and energy management. He started Wham Architecture in 2014 in order to focus on his work with churches and community groups with a particular emphasis on developing sustainable church community facilities.

We are grateful to the following organisations and groups for their financial support for the Thermal Upgrade and Refurbishment Project since the Construction Phase began in September 2019:



Supported by



WAT Group



**SCOTLAND'S
CHURCHES TRUST**

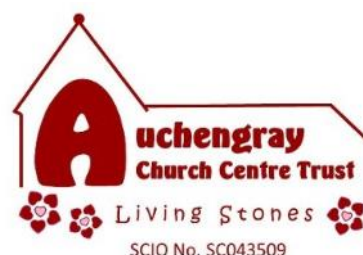


WAT IF?

**WOOLFORDS AUCHENGRAY
& TARBRAX IMPROVEMENT
FOUNDATION**



**Garfield Weston
FOUNDATION**



Financial support 20 / 21

Fabric Fund:

The **Fabric Fund** is a **Designated Fund** into which designated donations are lodged for particular Fabric expenditure.

No income was received for the Fabric Fund during 2020 / 21

The Fabric Fund balance remains unchanged from last year.

Reserve Fund:

We hold an **Unrestricted Reserve Fund** of £1,000 which is set aside to be used in the event of expenditure incurred should the Trust need to be wound up.

The Reserve Fund balance remains unchanged from last year.

Flower Show Fund:

The **Flower Show Fund** is a **Restricted Fund** into which net income from the annual flower show is lodged for particular ACC expenditure as agreed by the **Flower Show Committee**.

There was no Flower Show in 2020.

The Flower Show Fund balance remains unchanged from last year.

Auchengray Church Centre Fund:

The **ACC Fund** is a **Restricted Fund** into which grants and specified donations are lodged; these may only be used as specified by the Donors.

During the financial year 2020 / 21 we received **grants** totalling £221,932

These were all specified for the Thermal Upgrade and Refurbishment Project.

Grants:

LEADER	£59,214
Levensseat Trust	£34,162
Listed Places of Worship	£43,708
WAT-IF?	£25,000
Renewable Energy Fund	£59,847
Total Received for Thermal Upgrade & Refurbishment	£221,931

General Fund Finance 2020 - 2021

Our **General Fund** is used for the routine operation of the Trust .

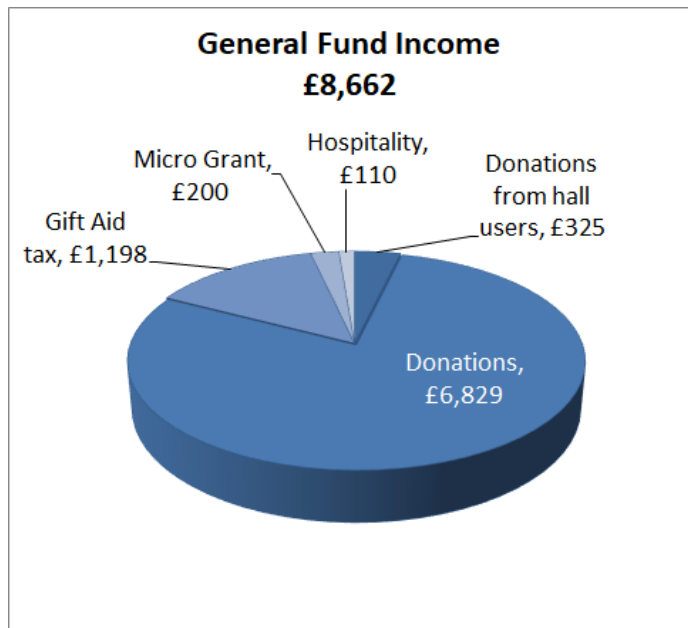
The **income** to this fund usually comes mainly from donations to the Community Church (including Gift Aid) and from hall users.

Income shown from hall users relates to use prior to April 2020. During the financial year 2020 - 2021 there was no public use of the buildings.

We are grateful to the members of the Community Church who continued to support the Trust during the past year.

Tarbrax Community Council provided a micro-grant of £200 towards the cost of Christmas lights for the hall (outside and windows).

The Hospitality donations are gifts towards the re-start of the café.

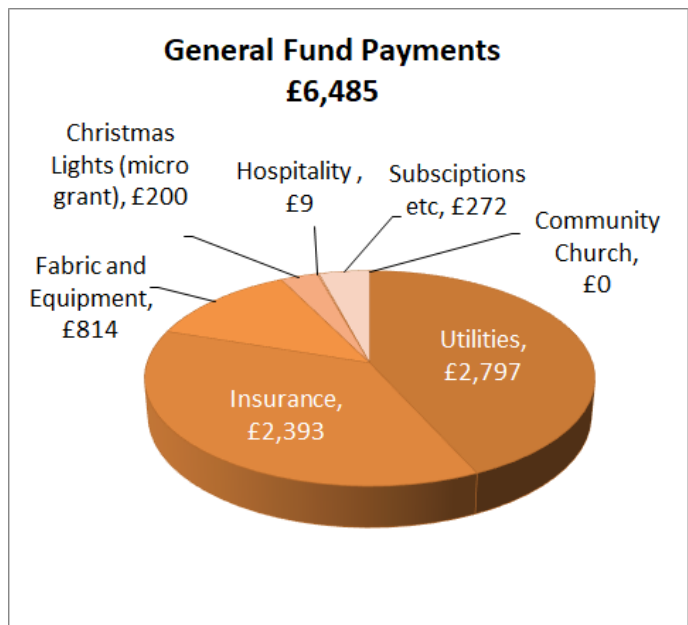


General Fund Payments relate to the routine running costs of the Trust.

These include:

heating oil, electricity, telephone, broadband, insurance, equipment and property maintenance, hospitality, annual subscriptions, fees and stationery etc.

There were no meetings of the Community Church and outdoor projects etc were undertaken by volunteers using recycled and donated materials.



Equipment purchases included the heavy duty Gazebo and PA cabling for the hall.

THANK YOU TO ALL OUR DONORS, VOLUNTEERS AND SUPPORTERS
We are very grateful for the ongoing encouragement and support
of the local community and grant funders during this difficult last year.

Summary of Accounts - Auchengray Church Centre Trust							
1 April 2020 - 31 March 2021							
	Unrestricted funds			Restricted Funds		Total Funds	Previous Year
	General Fund	Fabric Fund	Reserve Fund	Flower show	ACC		
Receipts							
Ordinary Receipts							
Donations							
Offerings	0					0	570
Gift Aid	4650					4650	3157
Tax Recovered on Gift Aid	1198					1198	983
Other offerings, donations etc	2179	0				2179	2633
Total Donations	8027	0		0	0	8027	7343
Receipts for fundraising activities							
Flower show				0		0	772
Other	0					0	
Rent from land and buildings							
Contributions from Hall users	325					325	1575
Receipts from other charitable activities							
Hospitality including Café	110					110	1408
Other receipts						0	0
Total Ordinary Receipts	8462	0	0	0	0	8462	11098
Extraordinary Receipts							
Donations					0	0	500
Gift Aid					0	0	3435
Tax Recovered on Gift Aid					0	0	858
Grants							
Stained Glass window						0	500
TCC (Christmas lights)	200					200	
Thermal upgrades					221931	221931	230226
Total Extraordinary Receipts	200	0	0	0	221931	222131	235519
Total Receipts	8662	0	0	0	221931	230593	246617
Payments							
Charitable Activities							
Ordinary Expenses							
Community Church	0					0	390
Heating Oil	206					206	2264
Electricity	2163					2163	675
Insurance	2393					2393	2342
Telephone / broadband	429					429	491
Fabric repairs and maintainance	80					80	1098
Equipment purchases	734					734	452
Hospitality including Café	9					9	1532
Subscriptions and training	150					150	424
Publicity, stationery, postage	52					52	133
Flower Show				0		0	335
Other expenses	69					69	60
Total Ordinary Expenses	6285	0	0	0	0	6285	10196
Extraordinary Expenses							
Grounds - fence					0	0	1145
TCC, Christmas lights	200					200	
Thermal upgrades					220570	220570	230751
Total Extraordinary Expenses	200	0	0	0	220570	220770	231896
Total charitable activities	6485	0	0	0	220570	227055	242092
Total Payments	6485	0		0	220570	227055	242092
Surplus (deficit) for year	2177	0	0	0	1361	3538	4525
Transfers between funds	0	0	0	0	0	0	0
Brought forward balance	9508	3295	1000	2765	16631	33199	28674
Carried Forward Balance	11685	3295	1000	2765	17992	36737	33199
Statement of Balances							
Bank and Cash in Hand	11685	3295	1000	2765	17992	36737	
The notes on the following pages form part of these accounts							
Approved by the Trustees and signed on their behalf							
R Campbell Fisher - Chairman							

Notes on the Accounts

Basis of Accounting: These accounts have been prepared on the Receipts & payments basis in accordance with the Charities & Trustee Investment (Scotland) Act 2005 and the Charities Accounts (Scotland) Regulations 2006 (as amended).

Accounting Period: These Accounts cover the period 1 April 2020 – 31 March 2021.

Trustees remuneration:

In the period to which these Accounts relate no Trustees received any remuneration.

Trustees expenses: No Trustees were paid expenses during this period.

Transactions with connected persons:

No third party received any consideration from the Trust for making available the services of any Trustee.

Transfers: There were no Transfers between Funds.

Collections for third parties:

In the year 2020 / 21 there were no collections for third parties.

Independent Examiner's Report

on the accounts of Auchengray Church Centre Trust for period 1 April 2020 to 31 March 2021.

Respective responsibilities of Trustees and Examiner

The charity's Trustees are responsible for the preparation of the accounts in accordance with the terms of the Charities and Trustee Investment (Scotland) Act 2005 and the Charities Accounts (Scotland) Regulations 2006. The charity Trustees consider that the audit requirement of Regulation 10(1) (d) of the Accounts regulations does not apply. It is my responsibility to examine the accounts as required under section 44 (1) (c) of the Act and to state whether particular matters have come to my attention.

Basis of Independent Examiner's statement

My examination is carried out in accordance with Regulation 11 of the Charities Accounts (Scotland) Regulations 2006. An examination includes a review of the accounting records kept by the charity and a comparison of the accounts presented with those records. It also includes consideration of any unusual items or disclosures in the accounts and seeks explanations from the trustees concerning any such matters. The procedures undertaken do not provide all the evidence that would be required in an audit and, consequently, I do not express an audit opinion on the accounts.

Independent Examiner's statement

In the course of my examination, no matter has come to my attention

1. which gives me reasonable cause to believe that in any material respect the requirements:

- to keep accounting records in accordance with Section 44 (1) (a) of the 2005 Act and Regulation 4 of the 2006 Accounts Regulations, and
- to prepare accounts which accord with the accounting records and comply with Regulation 9 of the 2006 Accounts Regulations

have not been met, or

2. to which, in my opinion, attention should be drawn in order to enable a proper understanding of the accounts to be reached.

Signed

Date

Robert Nelson ACMA CGMA

Structure, Governance and Management

Governing document

Auchengray Church Centre Trust is a Scottish Charitable Incorporated Organisation (SCIO) and was registered by OSCR on 25 October 2012. The structure of the organisation consists of the CHARITY TRUSTEES who are also the organisation's only members and comprise the organisation's BOARD.

The Trust is administered in accordance with its constitution.

Appointment of Trustees

New Trustees are appointed by invitation of the existing Trustees. The name(s) of eligible and willing individual(s) may be passed to any Board member at any time. The Board will consider such recommendation(s) at its next Board meeting. There is no fixed term for Trusteeship. Prior to their appointment, new Trustees would have expressed an interest in the Trust and would be familiar with the Trust's values, its aims and objectives as well as its day to day operations. All Trustees are required to sign the Trust Statement of Faith and to be in agreement with the Ethos of the Trust. As part of their induction programme, new Trustees are required to understand their statutory responsibilities.

Sub Committees

Sub Committees are set up in accordance with the Trust Constitution in order to encourage participation at sustainable levels of involvement and to benefit from particular skills and experience. We currently have a Flower Show Committee which runs the Annual Auchengray Flower Show and the Auchengray Church Centre Committee which assists the Trustees with the administration of property matters.

Teamwork

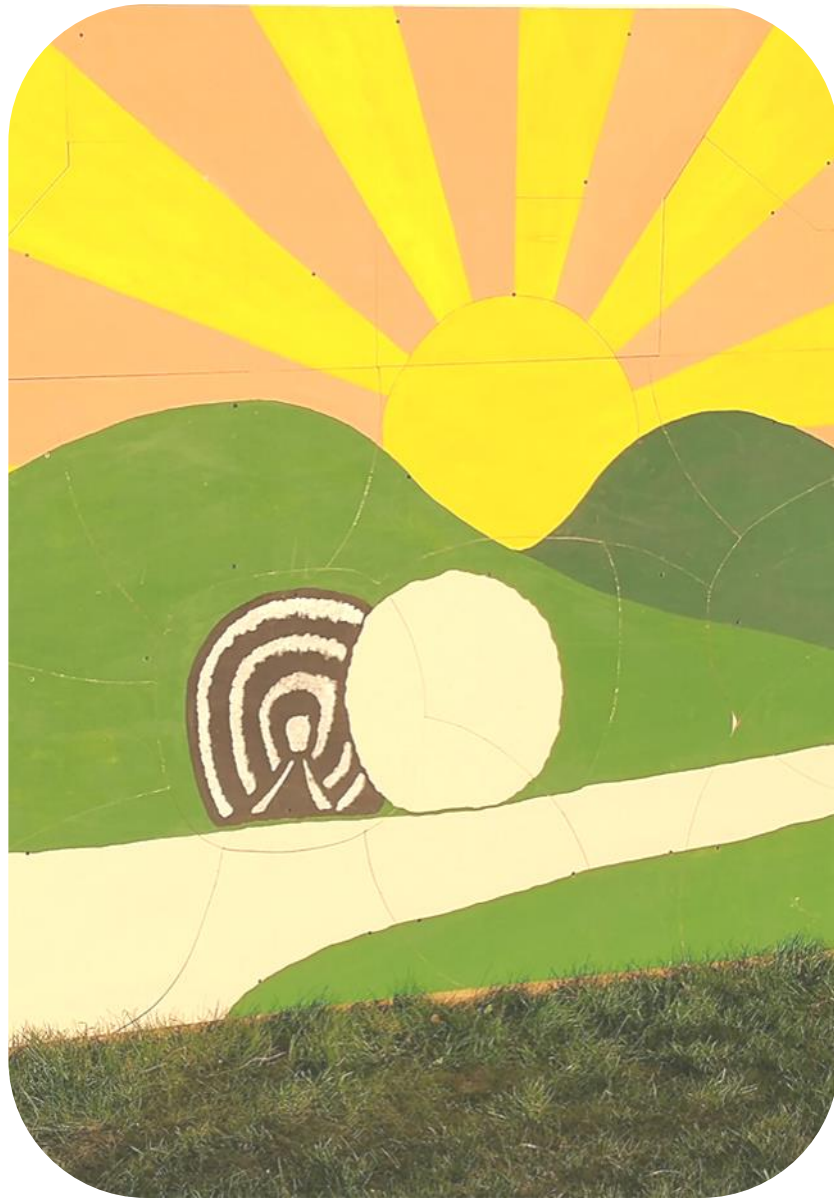
We regularly partner with other trusts and organisations in furtherance of the aims of the ACC Trust.

The ACC Trustees declare that they have approved the above Trustees' Report.

Signed on their behalf by

R Campbell Fisher (Chairman)

Date



Sunday's Coming!

SM Lockridge (1913 ~2000)

<https://www.thegospelcoalition.org/blogs/justin-taylor/its-fridaybut-sundays-comin/>

www.auchengraychurchcentre.org